



FUTURE INSIGHT


Together we make projects successful

Presentation:

Interdisciplinary collaboration by integrating BIM, DT & 3D

Agenda

- Introduction Future Insight
- Market trends
- Collaboration and integration in an Open Urban Platform
- Showcases
- Conclusion



We believe we live in a world where there is an **abundance of data** which, when used correctly, can greatly **improve** the development of civil projects and our living environment.

With that in mind, our team works everyday on **solutions** that inspire our clients to **redesign the way they think & work** and ultimately achieve better results.

Casper van Vulpen
Director of Sales



Introduction Future Insight

- Founded in 2014
- Based in the Netherlands, Greece and Sweden
- A software and consultancy company that
 - Provides consultancy on the use of open standards, BIM, 3D and Smart Cities solutions
 - Builds project collaboration and data management software
 - Makes use of the power of visualisations on maps
 - Builds BIM and 3D Digital twin solutions based on open standards

SELECTION OF CUSTOMERS



Gemeente Rotterdam



SELECTION OF PARTNERS



Market Trends

Business Consulting



3D Digital Twin



BIM



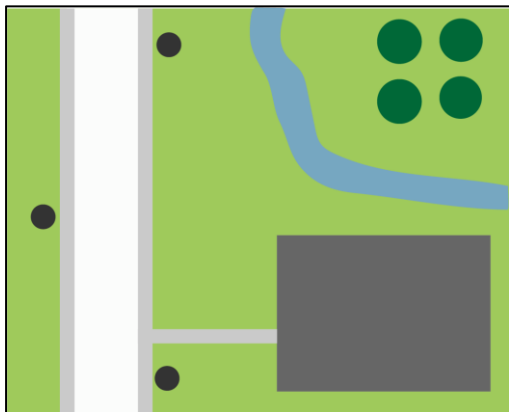
Open urban
platform



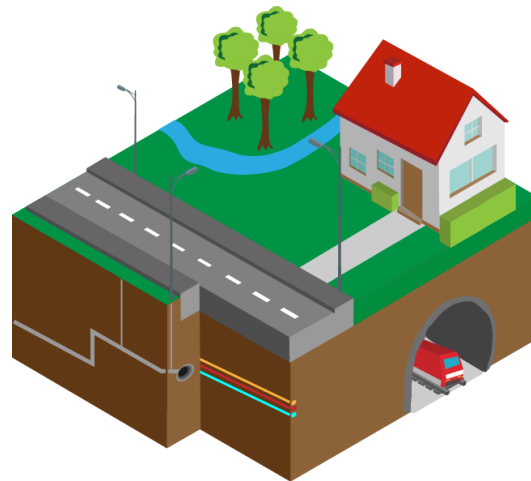
Clearly Project
Management

Product Consulting

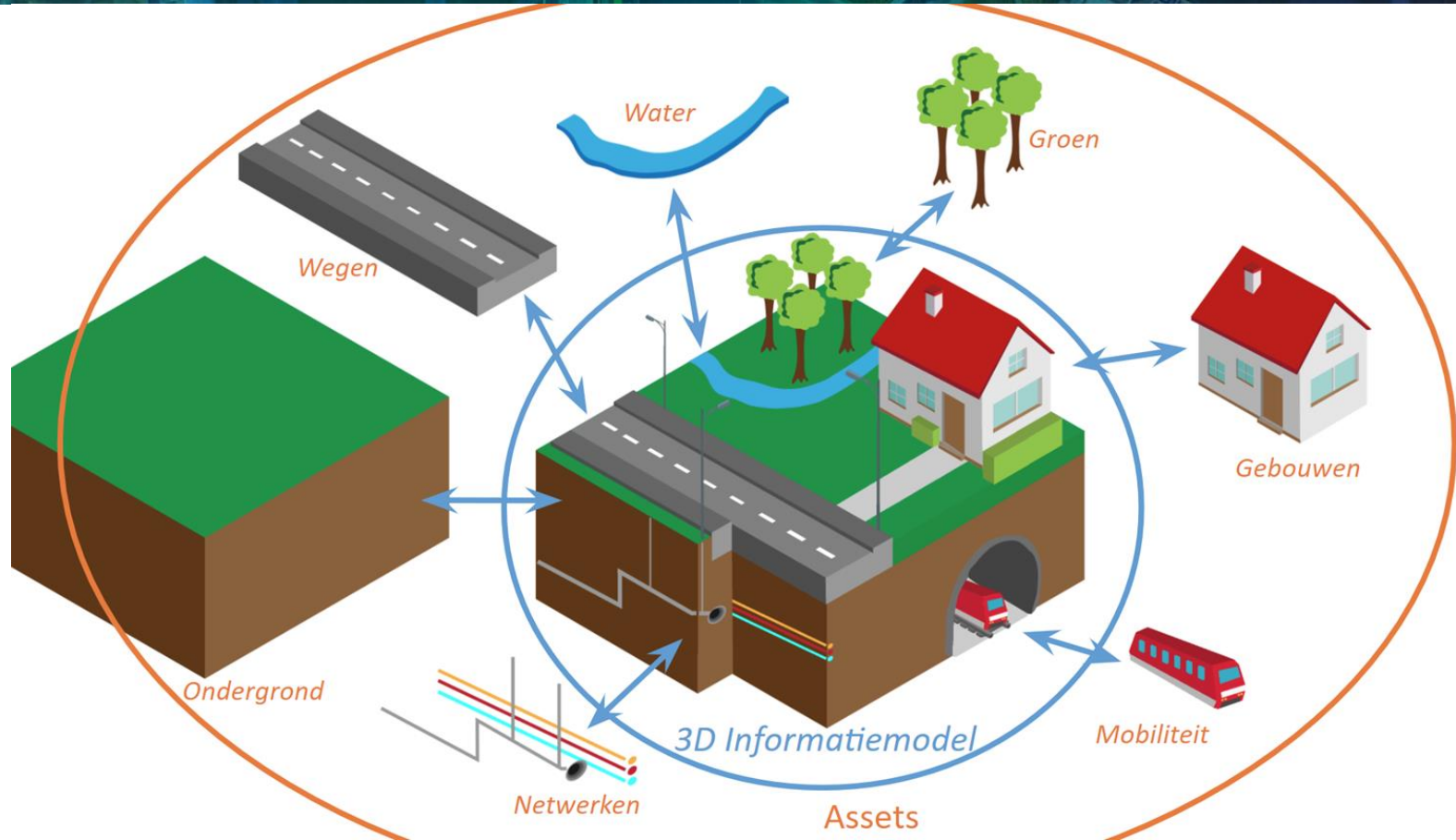
But first, the basic value of 3D



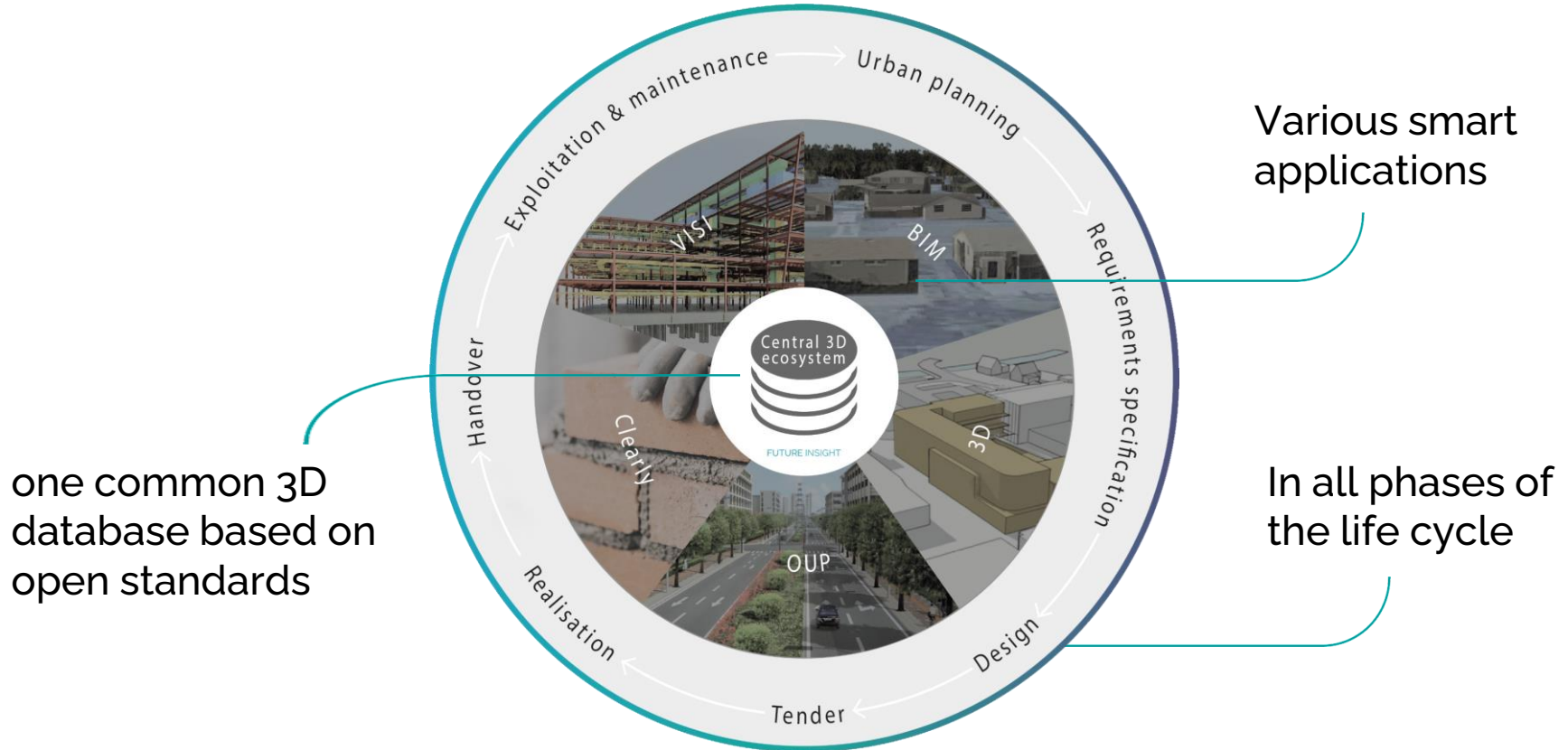
2D vs 3D



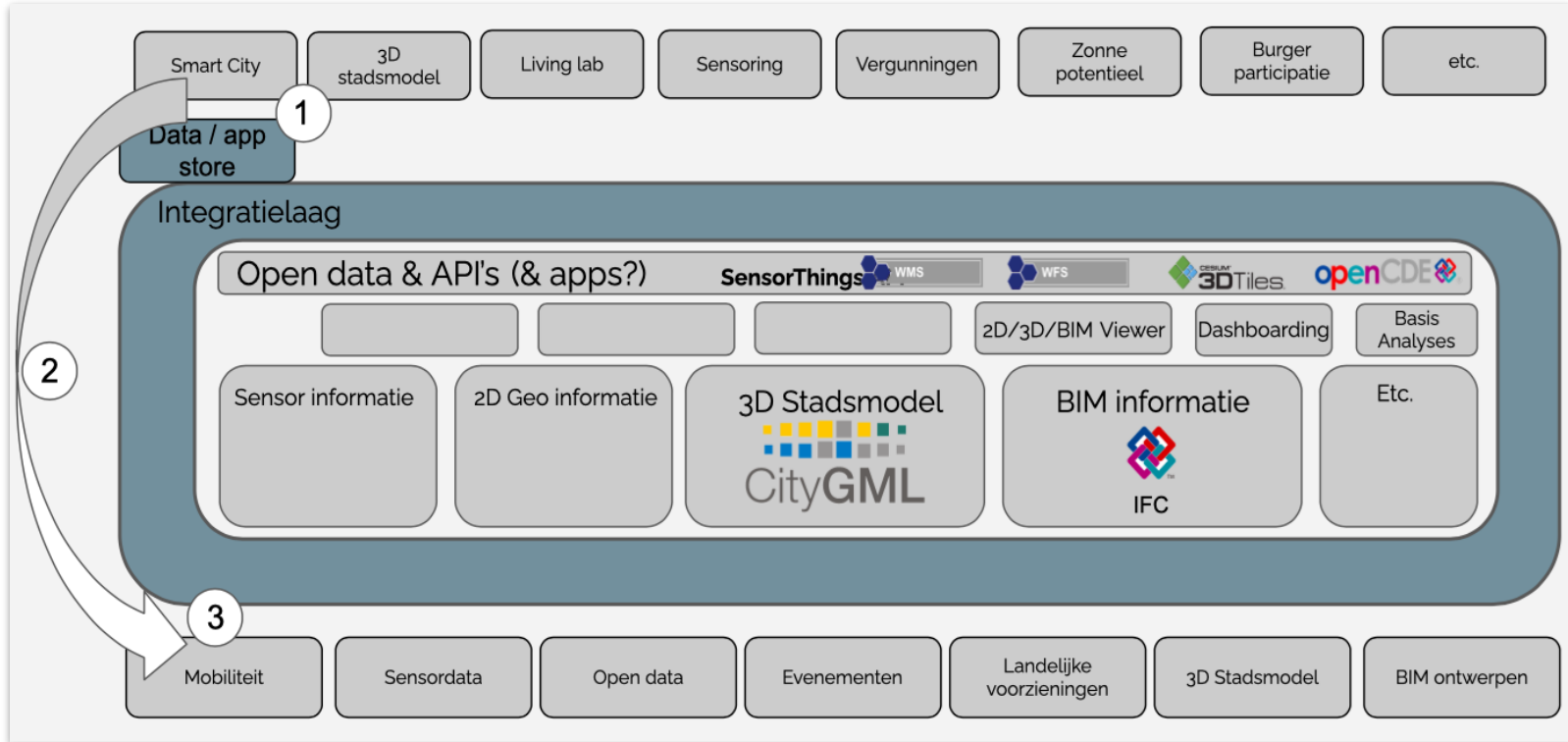
Additional dimension of data



Collaboration and integration in an Open Urban Platform (OUP)



Infrastructure of an Open urban data platform and marketplace



Examples of applications and functionalities

Faster approval of building permits with automated permit checks

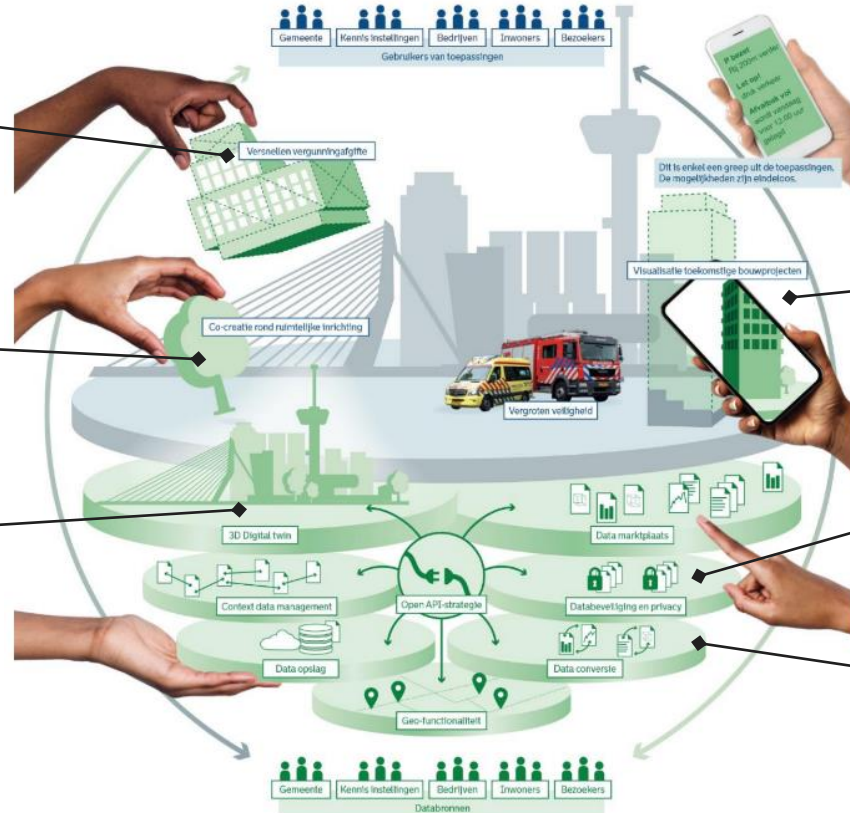
Co-creation and urban planning

3D digital twin

Visualisation of future construction projects

Data security and privacy

Data conversion



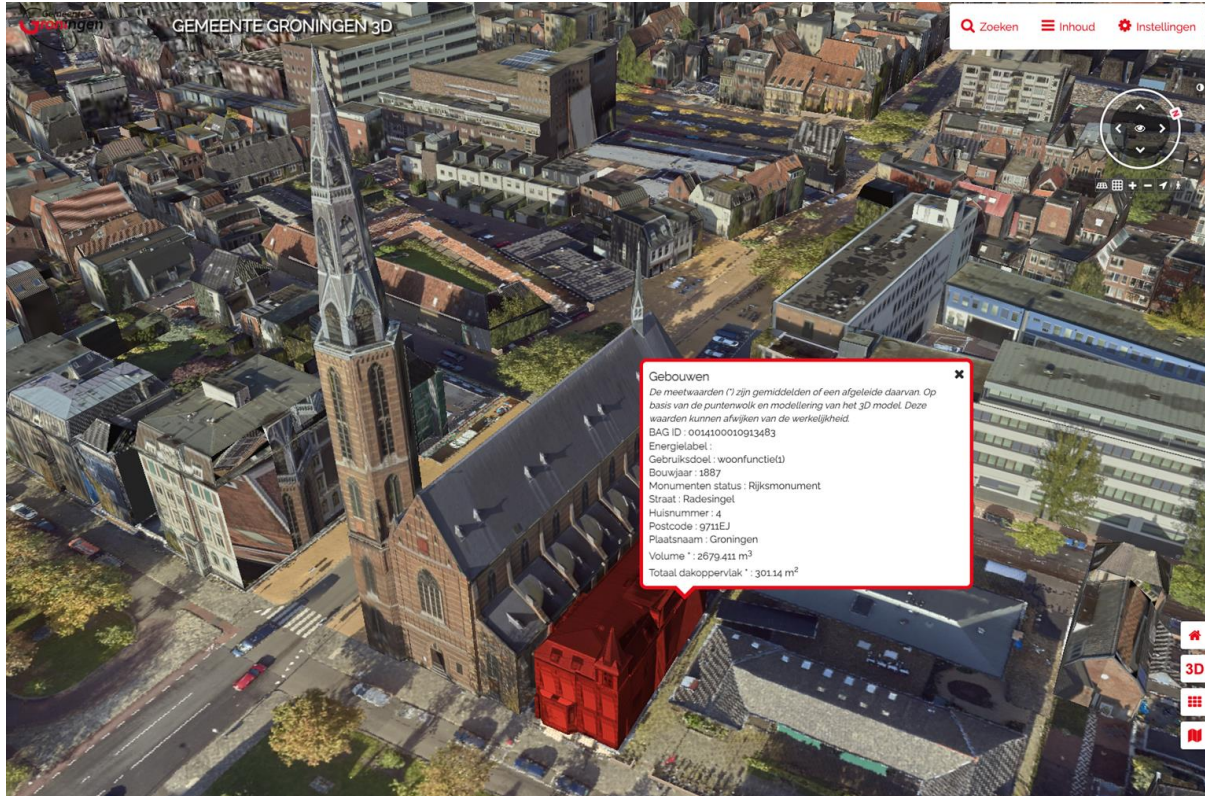
An aerial photograph of a complex multi-level highway interchange, featuring several overpasses and ramps. The image is overlaid with a semi-transparent blue-green color. The text "Digital Twin" is centered in white.

Digital Twin

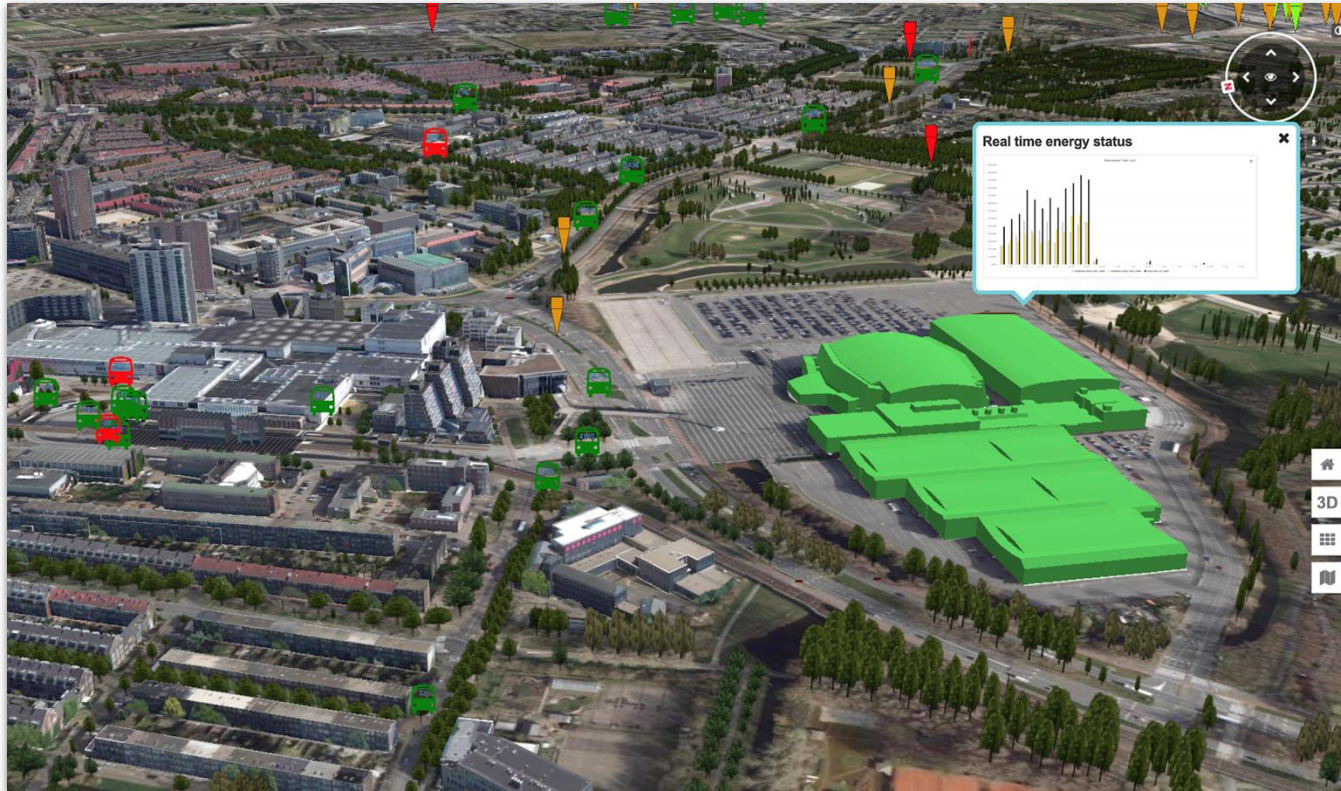
Flooding simulation



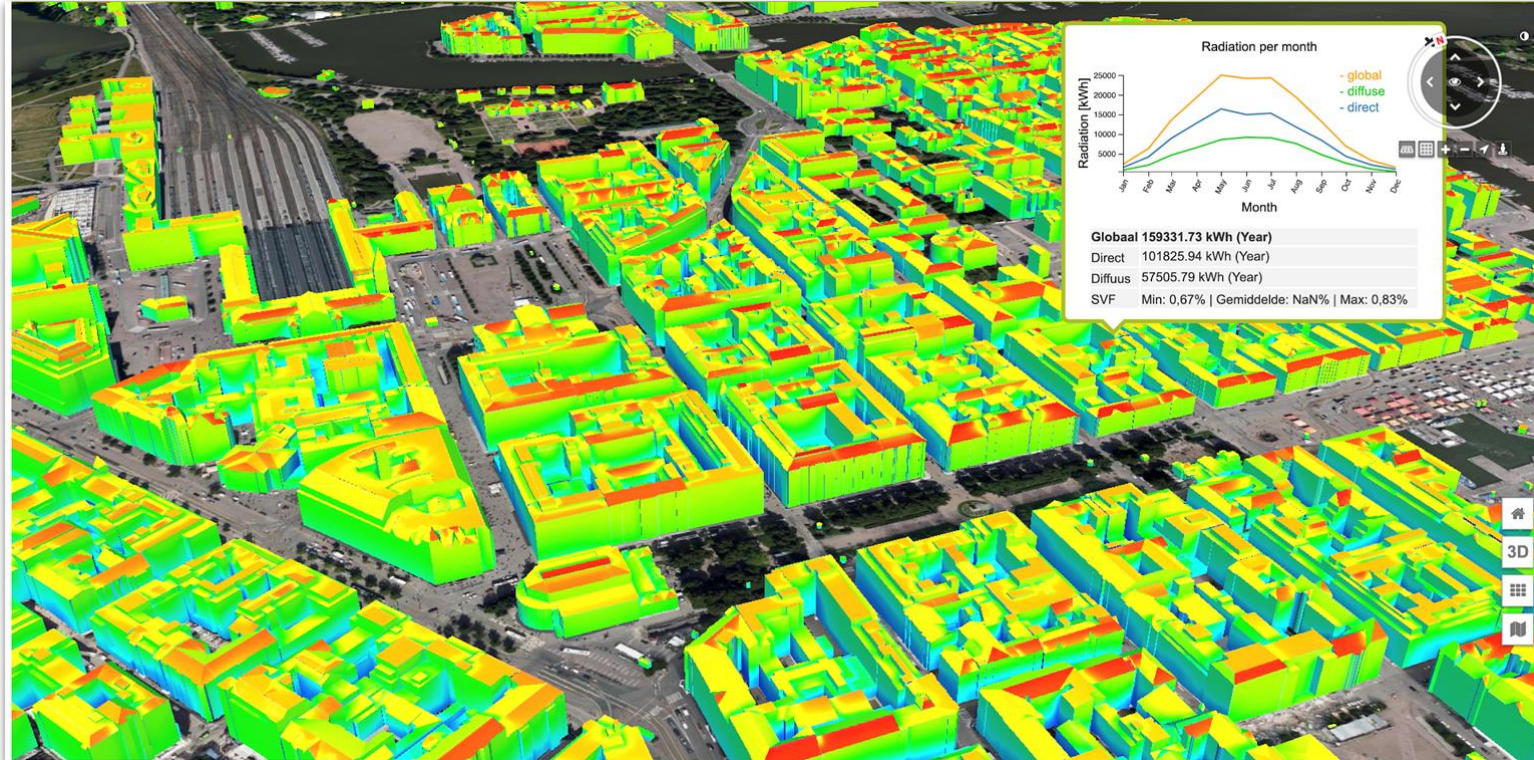
Visual representation of the City



Real time energy and traffic status



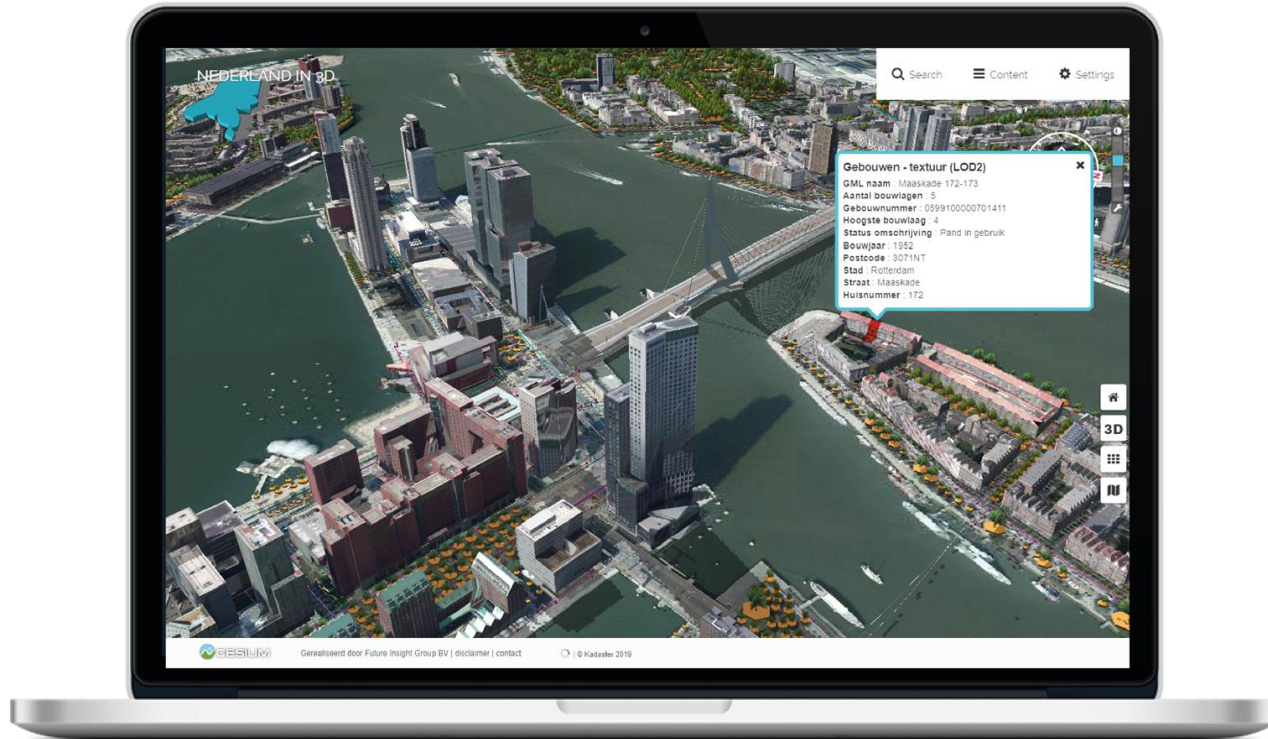
Solar potential analysis



Tree data



Rotterdam 3D Digital Twin



An aerial photograph of a complex multi-level highway interchange, featuring several overpasses and ramps. The image is overlaid with a semi-transparent blue-green color. The text 'BIM' is centered in the middle of the image.

BIM

BIM permit check Estland

BIM model check dashboard

SERVER SETTINGS PROJECT LISTING PROJECT OVERVIEW CHECKS

1807_EP_AR_Maleva-18-kortrelamu_2018-08-08.ifc (1)

- 01. Building Max Height Above Ground Level 1 ✓
- 02. Evaluation routes 24 ✗
- 03. Facade Material 156 335 ✓
- 04. Ground Max Ground Area 1 ✓
- 05. Location in zoning plan 535 ✗
- 06. Safety barriers 15 ✗
- 07. Spacing Minimal Door Width 104 17 ✓
- 08. Storages Max Above Ground 1 ✓

Click: Select element
Alt + Click: Show element information
Shift + Click: Select multiple elements
Ctrl + Click: Select all elements
Shift + R: Rotate all elements
Ctrl + Click and drag: Rotate and position section plane
Ctrl + Click: Enable section plane if enabled

Debug mode

BIM model check dashboard

SERVER SETTINGS PROJECT LISTING PROJECT OVERVIEW CHECKS

1807_EP_AR.ifc (11)

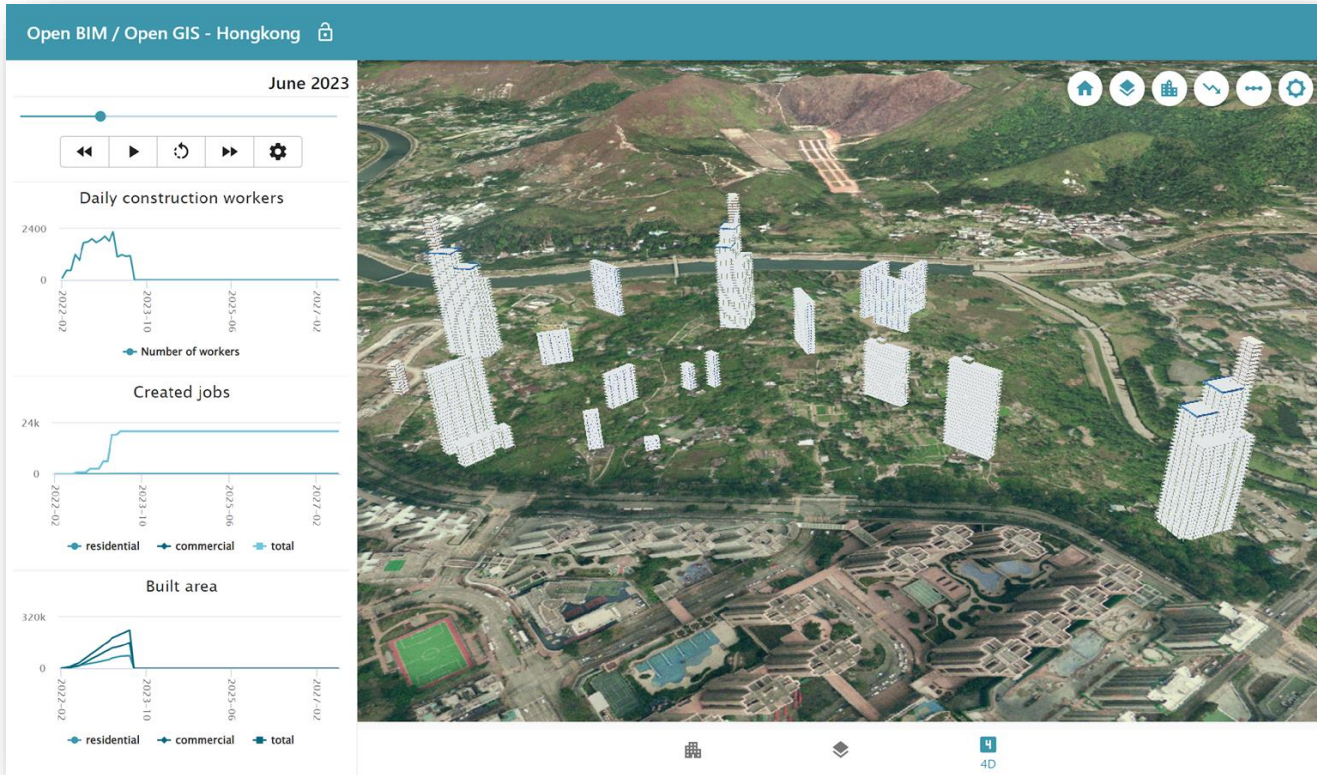
- 01. Building Max Height Above Ground Level 1 ✓
- 02. Evaluation routes 24 ✗

- Failures
- component0 1a25a4PL_P8EANCp2(3b4)
- component1 1a25a4PL_P8EANCp2(3b4)
- component2 1a25a4PL_P8EANCp2(3b4)
- component3 1a25a4PL_P8EANCp2(3b4)
- component4 1a25a4PL_P8EANCp2(3b4)
- component5 1a25a4PL_P8EANCp2(3b4)
- component6 1a25a4PL_P8EANCp2(3b4)
- component7 1a25a4PL_P8EANCp2(3b4)
- component8 1a25a4PL_P8EANCp2(3b4)
- component9 1a25a4PL_P8EANCp2(3b4)
- component10 1a25a4PL_P8EANCp2(3b4)
- component11 1a25a4PL_P8EANCp2(3b4)
- component12 1a25a4PL_P8EANCp2(3b4)
- component13 1a25a4PL_P8EANCp2(3b4)
- component14 1a25a4PL_P8EANCp2(3b4)
- component15 1a25a4PL_P8EANCp2(3b4)

Click: Select element
Alt + Click: Show element information
Shift + Click: Select multiple elements
Ctrl + Click: Select all elements
Shift + R: Rotate all elements
Ctrl + Click and drag: Rotate and position section plane
Ctrl + Click: Enable section plane if enabled

Debug mode

4D timeslider Hong Kong



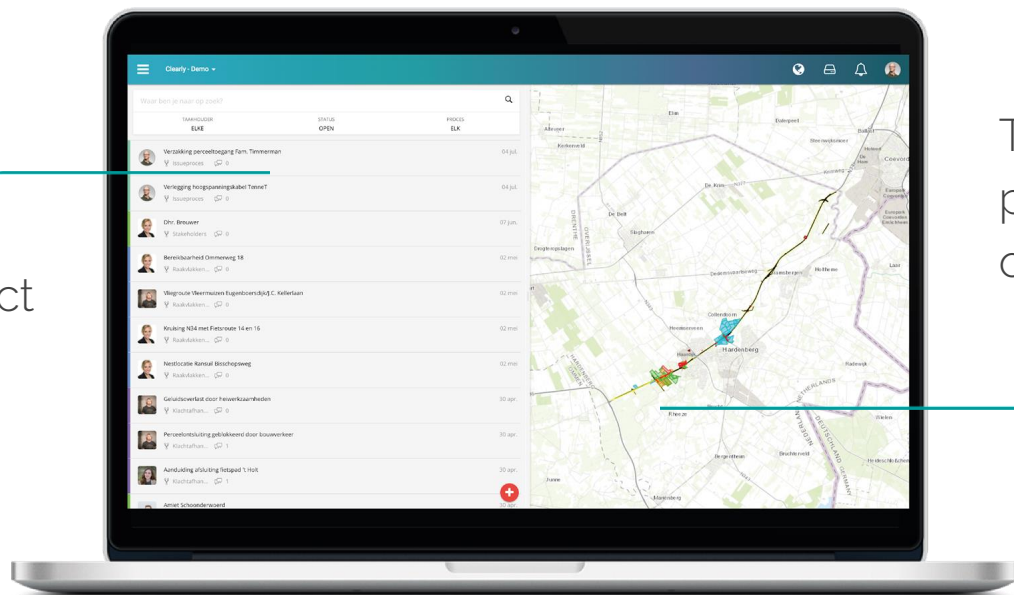


clearly

Digital collaboration and project management

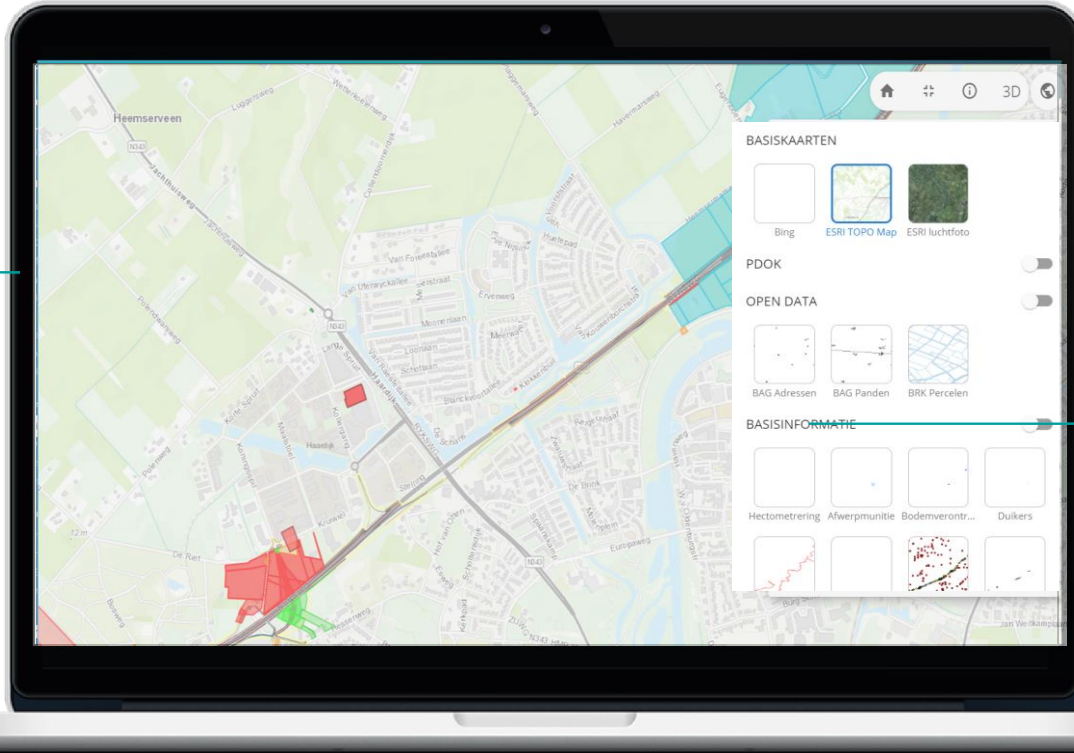
Bringing information and tasks together

Data archive, project management and workflows



The most current project information on a 2D or 3D map

Optimal overview of project information



The map shows a combination of publicly available data and project/city specific data

Everyone in the project team can also easily add dynamic information

Bringen information and tasks together

Conclusiekaart flora en fauna -
Beperkingen binnen plangrens

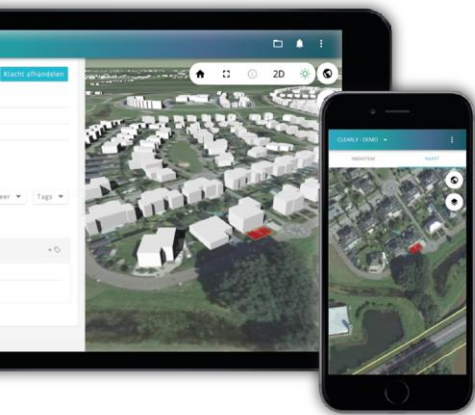
Attributen

Omschrijving conclusie
Vliegroue vliegroute kruist plangrens en werkerterrein Willemsdijk.
Instandhouden vliegroue en aanbrengen vliegroutevriendelijke
verlichting.

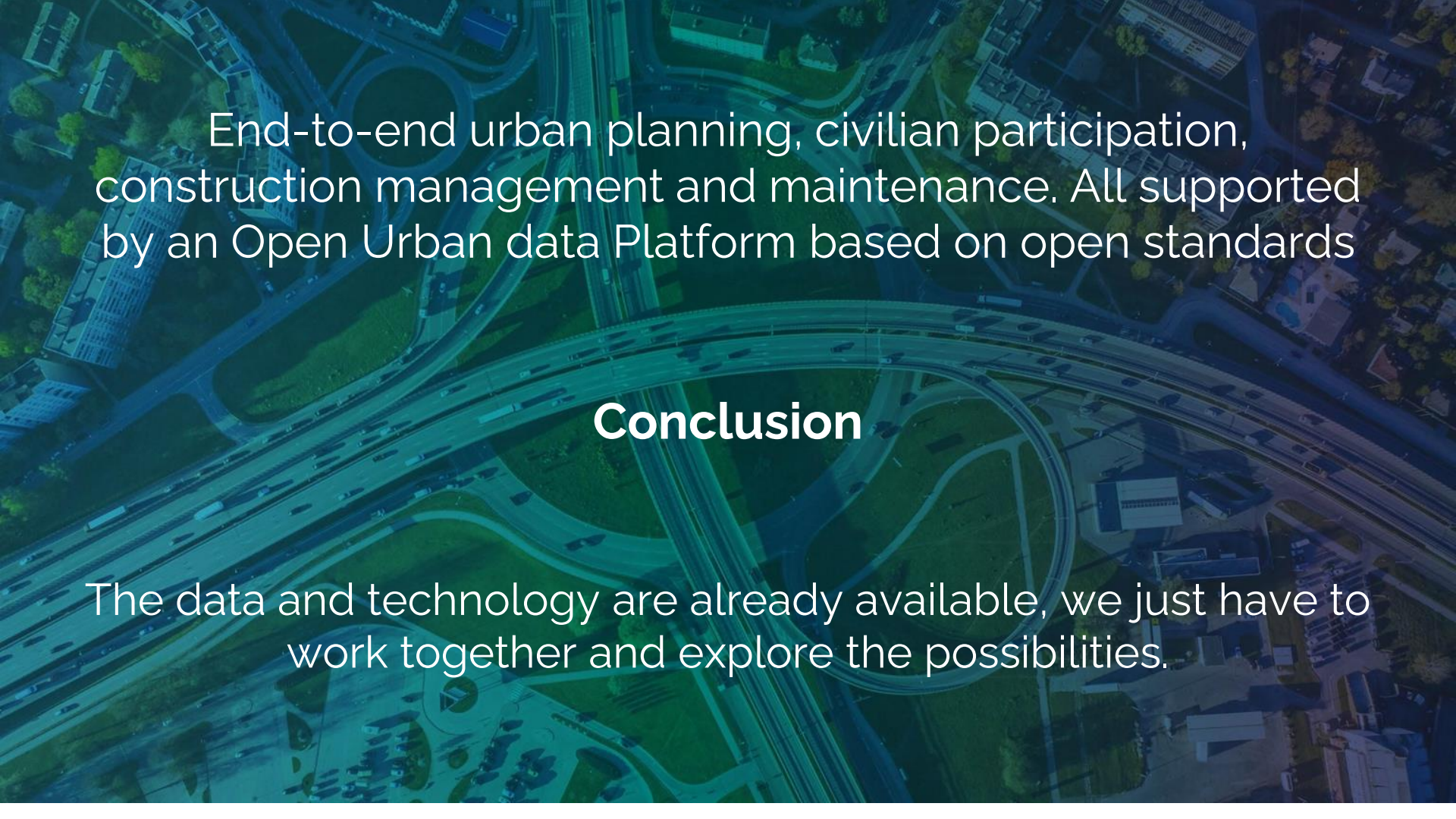
Instantly spot focus area's and execute
tasks with (automated) workflows.

The screenshot displays a mobile application interface for environmental management. On the left, a sidebar shows a map titled 'Conclusiekaart flora en fauna - Beperkingen binnen plangrens' with a blue highlighted area. Below it, an 'Attributen' section provides details: 'Omschrijving conclusie' and 'Vliegroue vliegroute kruist plangrens en werkerterrein Willemsdijk. Instandhouden vliegroue en aanbrengen vliegroutevriendelijke verlichting.' The main map on the right shows a green flight route along a road, with a red oval highlighting a specific focus area. A text box over the map states: 'Instantly spot focus area's and execute tasks with (automated) workflows.' The map includes various street names like 'Ommenweg', 'Larksaan', and 'Rheezerveenweg', and features a navigation toolbar with icons for home, zoom, and 3D view.

Optimal overview and control



see it. get it. do it. clearly

An aerial photograph of a complex highway interchange, featuring multiple levels of overpasses and ramps. The image is overlaid with a semi-transparent blue-green filter. The text is centered and white, providing a high-contrast look against the background.

End-to-end urban planning, civilian participation, construction management and maintenance. All supported by an Open Urban data Platform based on open standards

Conclusion

The data and technology are already available, we just have to work together and explore the possibilities.